



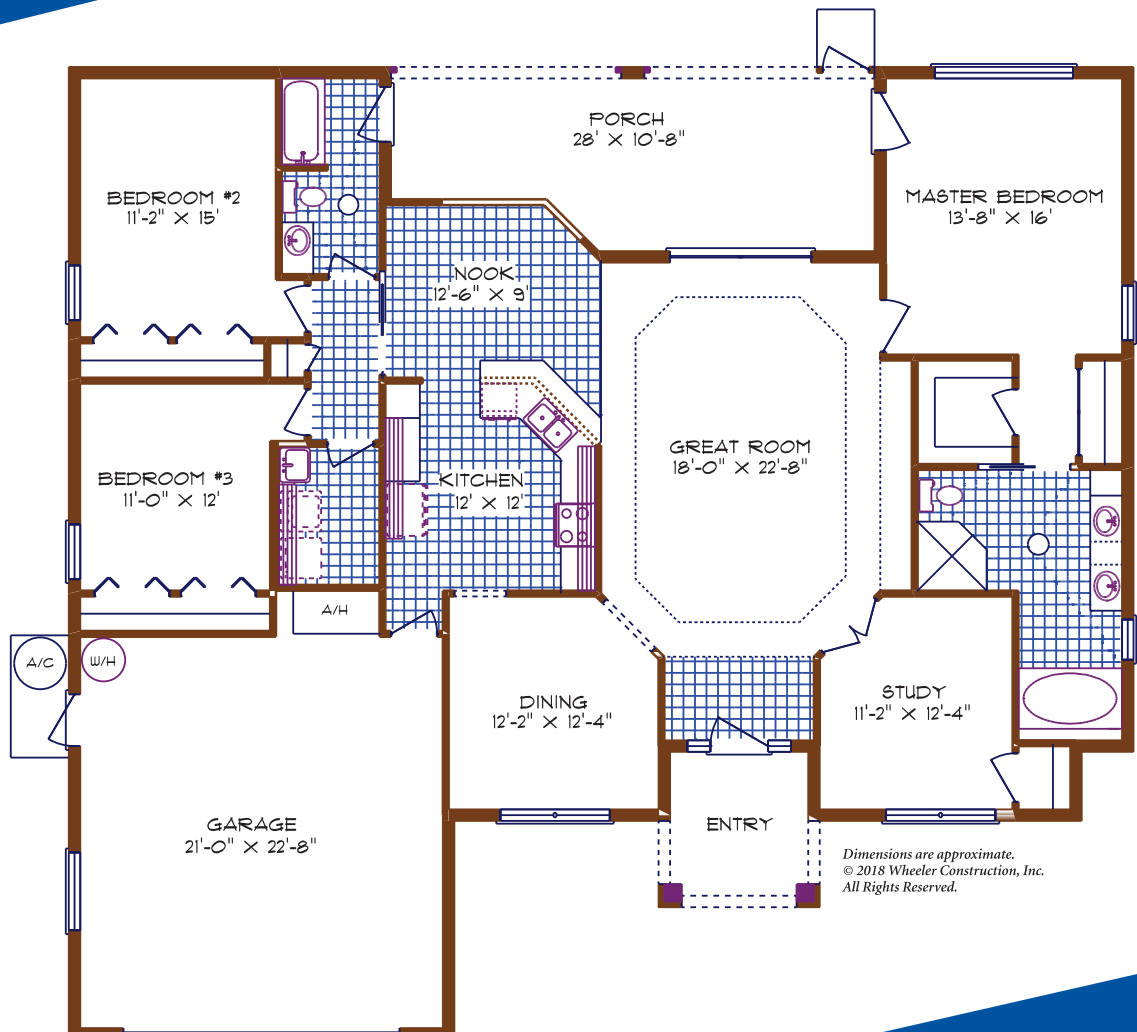
3/2

**WHEELER**  
CONSTRUCTION INC.

General Contractor  
State Certified  
Lic. #CGC034206

## The Amherst

Living.....2,135  
Entry.....79  
Garage.....530  
Porch.....267  
Total.....3,011



*"The Amherst has it all; three large bedrooms, a study, lots of closet space, a formal dining room, a morning room and an oversized garage. Its elegant front entrance opens to a huge great room with its tray ceiling for even more dramatic effect."*

3255 E. Gulf to Lake Hwy.  
Inverness, FL 34453  
Phone: (352) 726-0973  
[Sales@WheelerConstructionFL.com](mailto:Sales@WheelerConstructionFL.com)

[www.WheelerConstructionFL.com](http://www.WheelerConstructionFL.com)