

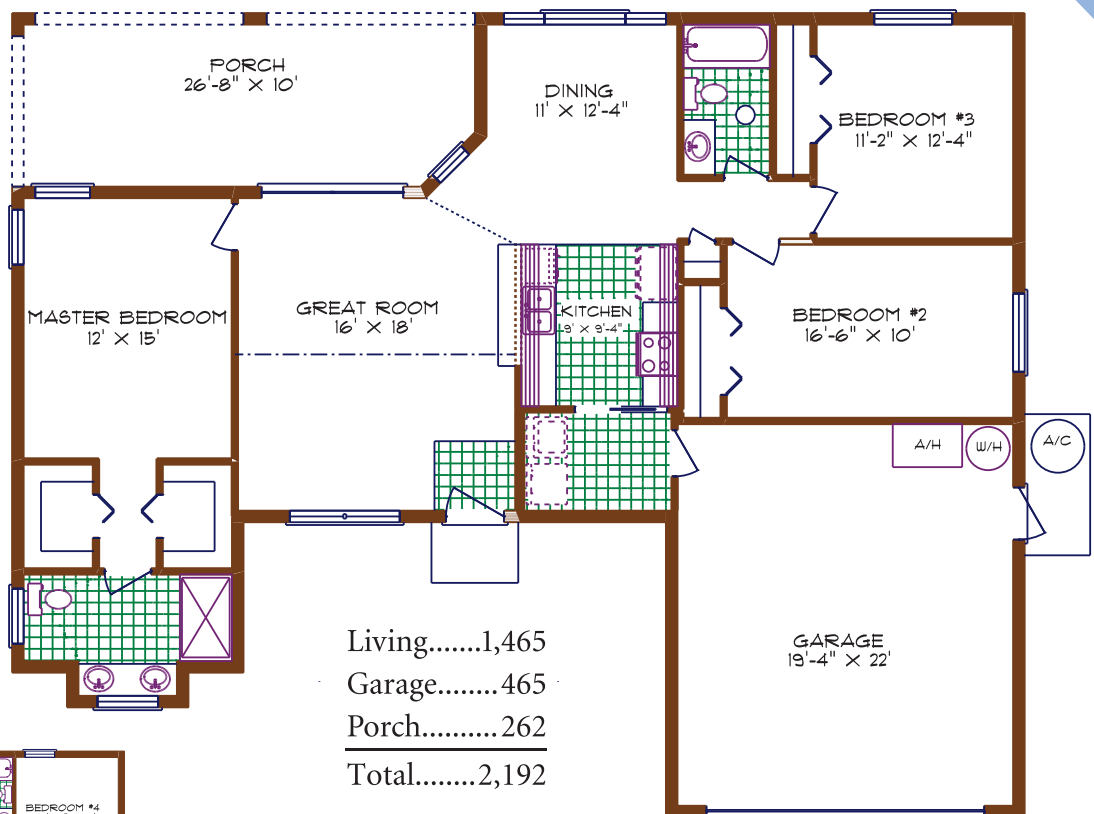


3/2

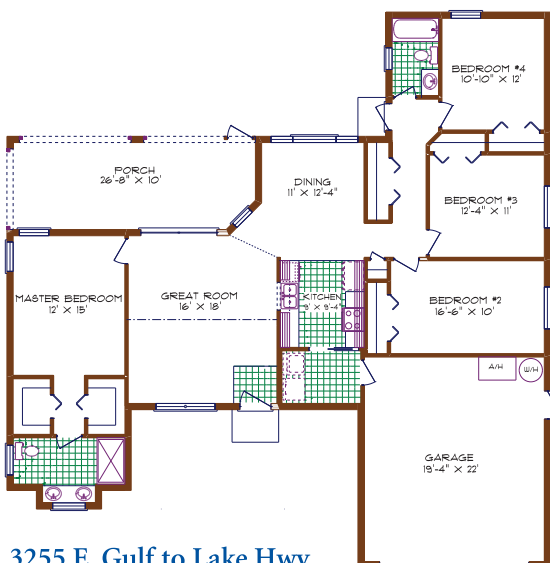
WHEELER
CONSTRUCTION INC.

General Contractor
State Certified
Lic. #CGC034206

"The Arlington boasts a large master suite with His and Her walk-in closets. It offers direct access to the covered porch. The 2-car garage is only a few steps from the kitchen making grocery shopping items easier to unload."



Dimensions are approximate.
© 2018 Wheeler Construction, Inc.
All Rights Reserved.



◀ **Optional
Arlington 4/2
Floor Plan**

Living.....1,701
Garage.....465
Porch.....262
Total.....2,428

Dimensions are approximate.
© 2018 Wheeler Construction, Inc.
All Rights Reserved.

The Arlington

3255 E. Gulf to Lake Hwy.

Inverness, FL 34453

Phone: (352) 726-0973

Sales@WheelerConstructionFL.com

www.WheelerConstructionFL.com